

RapidPak RP-55



Most Advanced Sanitary Design in the Packaging Industry

- Enhances access and cleanability; reduces food safety concerns
- Dairy 3A sanitation standard compliance
- Potential for lower swab counts and longer shelf life

Exceptionally High Cycle Rates Through the Use of Servo Motor Technology

- Enhances access and cleanability; reduces food safety concerns
- Dairy 3A sanitation standard compliance
- Potential for lower swab counts and longer shelf life

Mechanical Simplicity; Fewer Moving Parts

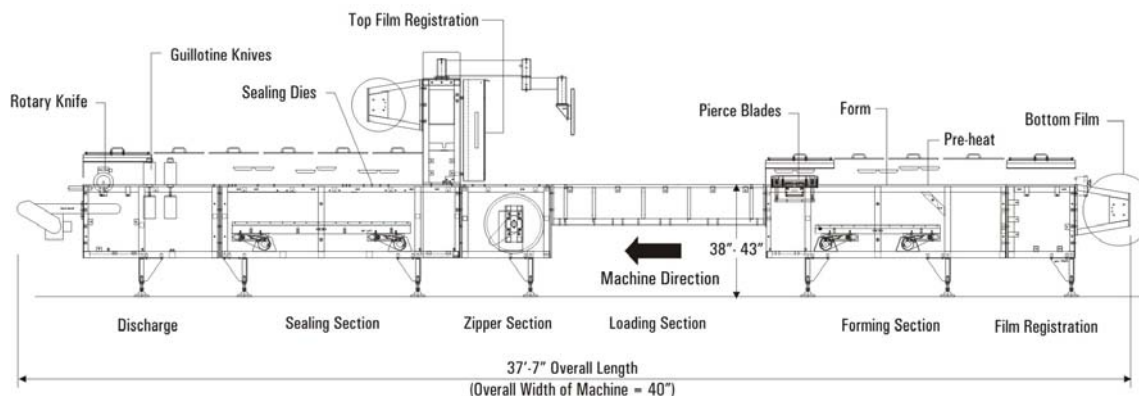
- Reduces downtime, maintenance costs, and part costs
- Reduces the need for trained expert personnel

Readily Available Parts and Components

- Fewer consumables; lower usage cost improves purchase justification
- Industry standard, off-the-shelf components

Allen Bradley CompactLogix System and Modem

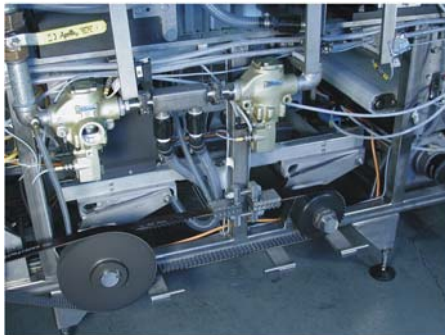
- Faster, easier maintenance
- 24/7 modem service



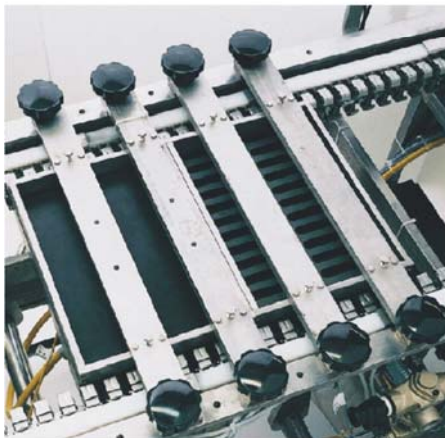
RapidPak RP-55



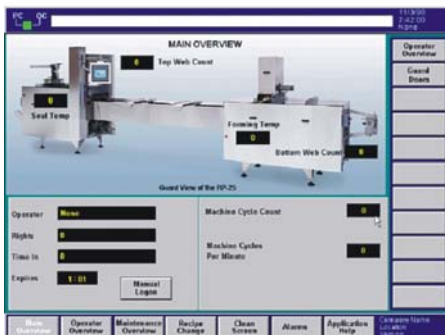
Sanitary Tubular Frame



Servo-Driven Die Closing Lift System



Pre-Heat Forming System



Allen Bradley
PanelView Plus Touchscreen

SPECIFICATIONS:

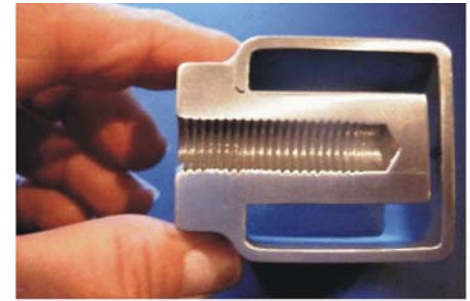
- Up to 5" (125 mm) max. formed pocket.
- Up to 30" (762 mm) index.
- Flexible or rigid film.
- Custom frame welded and machined to $\pm 0.001"$ tolerance ensures consistent, long-term performance and reduces parts wear.
- Guards remain on machine:
 - Eliminates handling
 - Easy-open access
- Servo motors on all major machine functions. Continual feedback allows Servos to move faster, smoother, and more accurate in pneumatic systems.



- Separate pre-heat is more hygienic, maximizes heating and forming times, and allows faster cycle rates.
- Individually driven shape cutting heads only cut filled packages:
 - Eliminate jams and waste.
 - Provides trend reports.
- Remote electrical panel and NEMA 4 watertight components ensure reliable start-up after aggressive cleaning.
- Easily sourced parts; lower annual cost.

UTILITIES

- Electrical: 230/3/60. Amperage to be determined once machine is configured.
- Compressed Air: Typically 2-3 cfm, 80-90 psi
- Water: 30-50 gallons per hour at 10-50 psi



Hermetically Sealed Weldments



Sanitary Tilt-Away Guards



Shape Cutting



Convenient Parts Sourcing